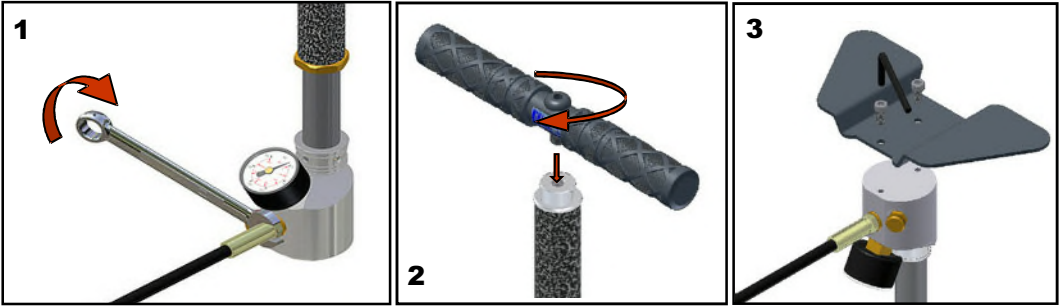


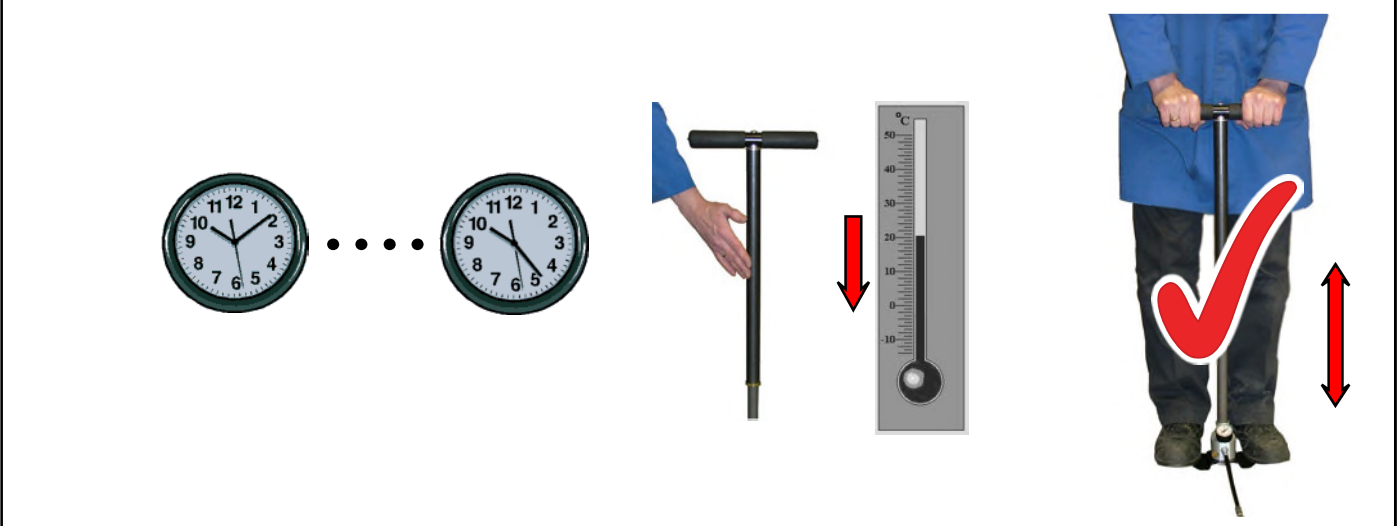
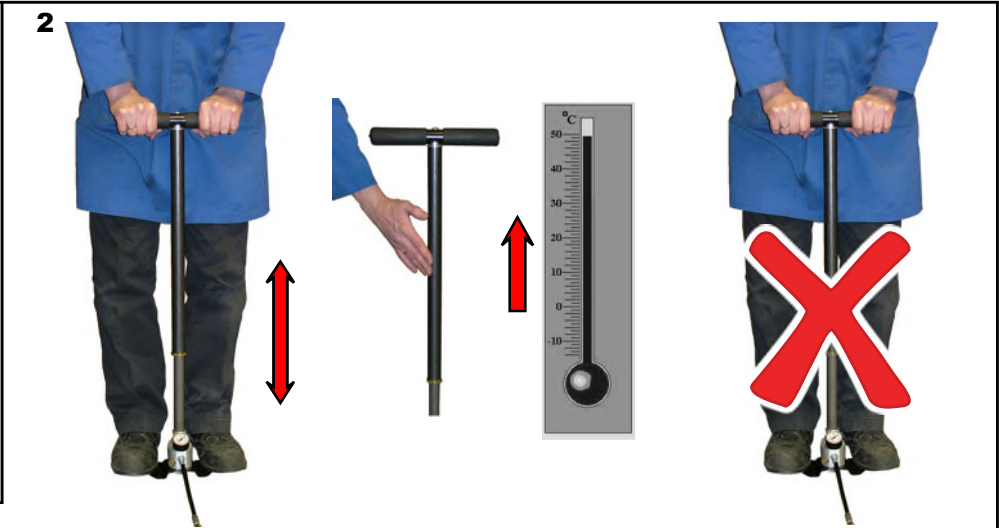
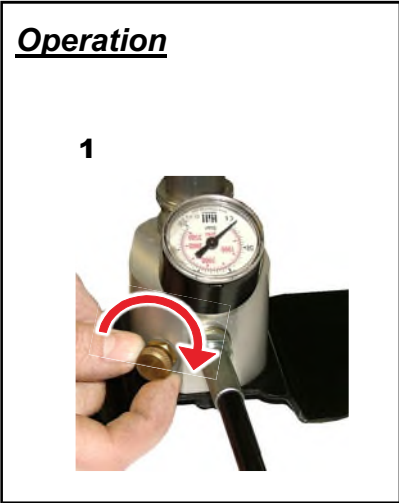
# Model 3128 AIR COMPRESSOR PUMP

## Operating Instructions

### Assembly



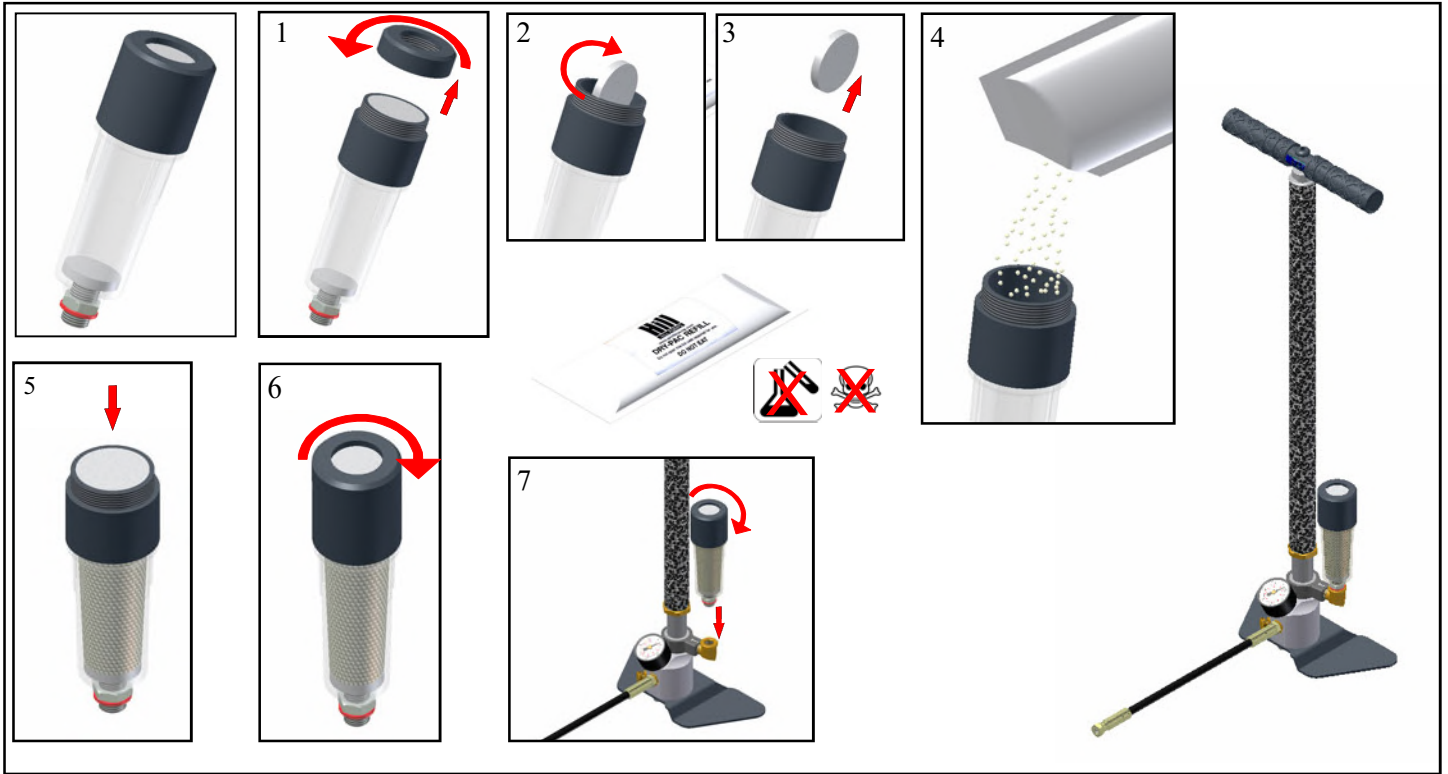
### Operation



**275 bar MAX**



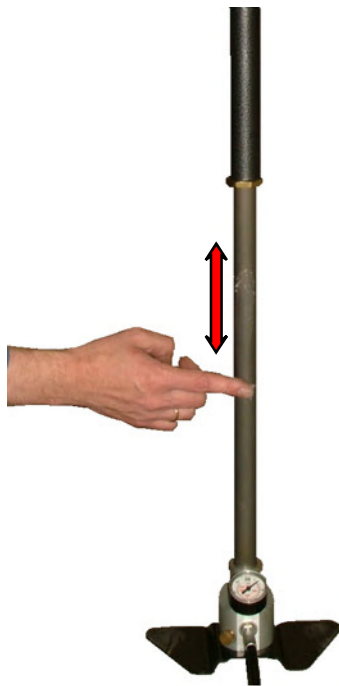
**DRY-PAC Patented Dry Air Flow System**



**Lubrication**



06R50011



January	February	March
	✓	
April	May	June
	✓	
July	August	September
	✓	
October	November	December
	✓	



**DO NOT USE PETROLEUM/OIL OR PROPELLANT BASED PRODUCTS**



06R35055

**ERNEST H. HILL LIMITED**

10-12 MEADOWBROOK PARK - STATION ROAD - HALFWAY - SHEFFIELD S20 3PJ - ENGLAND

Telephone; +44 (0) 114 248 4882

Fax; +44 (0) 114 248 9142

web site; <http://www.airriflepump.com>

e-mail; [sales@hillpumps.com](mailto:sales@hillpumps.com)



Q06338 ISO 9001